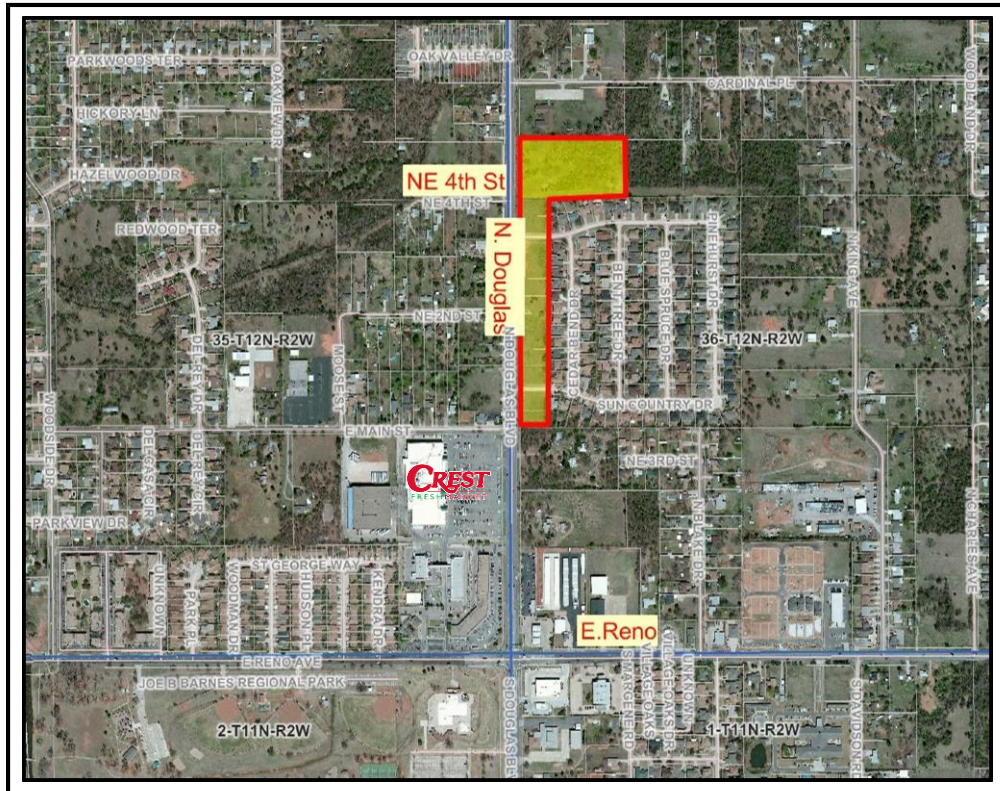




**JR FULTON
& ASSOCIATES, INC.**

COMMERCIAL, INDUSTRIAL AND INVESTMENT REAL ESTATE

**OFFERED EXCLUSIVELY
BY: PAULA FULTON**



TYPE PROPERTY: DEVELOPMENT LAND FOR SALE

LOCATION: 500 Block N. Douglas
Midwest City, OK 73130

LAND AREA: 11.54 Acres total - mol
Owner will divide.

GENERAL INFO: Twelve of the lots on Douglas are 150 ft. deep. All have frontage on Douglas.
The 7.5 acres on the north has 350 ft. frontage on Douglas.
Water, sewer, gas and electric services are available.

SALE PRICE: \$1,260,000.00/ \$2.50 p/sf

**FOR ADDITIONAL
INFORMATION CONTACT:** PAULA FULTON
Cell: 405.410.4453
Office: 405.840.0200
Email: paula@jrfulton.com
www.jrfulton.com

The information contained herein has either been provided by the property owner or obtained from sources deemed reliable but not guaranteed. Prospective Buyers/Tenants should carefully verify items of income and expense and all other information contained herein. All reference to square footage provided by County Assessor.