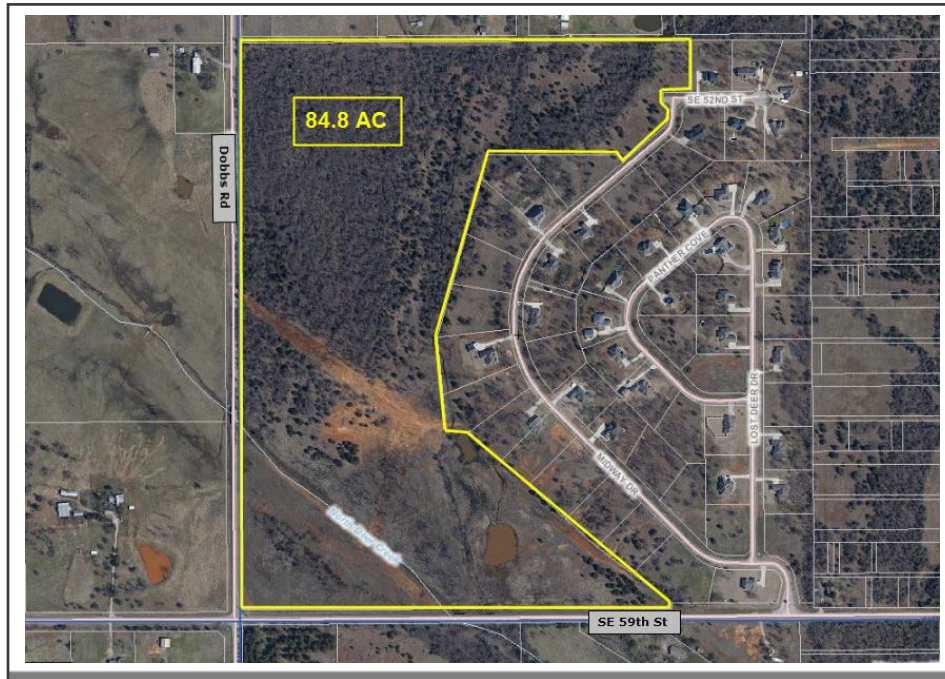




JR FULTON & ASSOCIATES, LLC

COMMERCIAL, INDUSTRIAL AND INVESTMENT REAL ESTATE

OFFERED EXCLUSIVELY
BY: RICK LARZALERE



PROPERTY TYPE: Development Land – Residential | Agricultural

LOCATION: 20221 S. E. 59th St., Oklahoma City, OK 74857

LAND AREA: 84.82 Acres MOL

ZONING: “R-A” (Rural Residential) & a proposed 5 AC commercial corner, currently zoned “AA”. Property had been platted for 36 (1 AC) home sites.

HIGHLIGHTS: Great Location. 1.5 miles east of the proposed OTA “Eastern Loop” and 1.5 miles north of I-40.
Beautiful wooded area with over 70 pecan trees and open area with creek.
HARRAH SCHOOLS

FOR SALE: \$425,000.00 (\$5,000.00 / AC)

FOR ADDITIONAL INFORMATION CONTACT: Rick Larzalere, Broker Associate
Cell: 405-831-5797
Office: 405-840-0200
Email: rick@jrfulton.com
www.jrfulton.com

4334 NW Expressway, Suite 100, Oklahoma City, OK 73116