



**JR FULTON
& ASSOCIATES, LLC**

COMMERCIAL, INDUSTRIAL AND INVESTMENT REAL ESTATE

OFFERED EXCLUSIVELY
BY: RICK LARZALERE



PROPERTY: Y Mart Convenience Store
Real Estate, Business and Equipment

LOCATION: 7030 S. Council Rd.
Oklahoma City, OK 73169

GENERAL INFO: Building Size: 2,038 SF MOL | Land Size 1.13 AC MOL
5 Gas Pumps | Deli | Beer | Lottery
High Volume SW OKC Location | Same Ownership Since 1997
Very Attractive & Updated Interior
Ample Parking w/ Convenient Ingress & Egress
Price includes Excess Land for Separate Business or Sale
“Branding” available

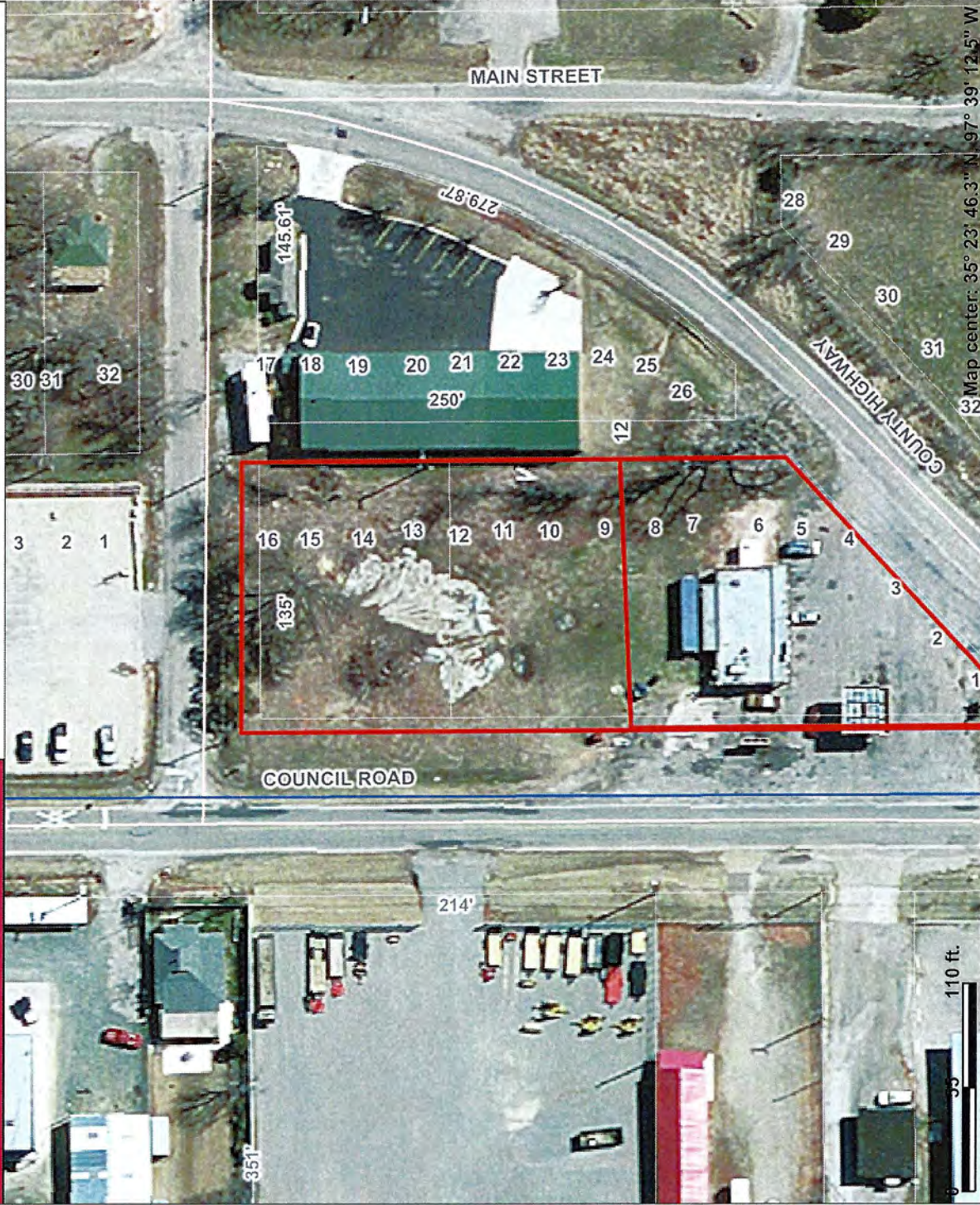
SALE PRICE: \$395,000. Shown by Appointment
NOTE: THIS IS A NEW REDUCED PRICE!!

FOR ADDITIONAL INFORMATION CONTACT: Rick Larzalere, Broker Associate
Cell: 405.831-5797
Office: 405.840-0200
Email: rick@jrfulton.com
www.jrfulton.com



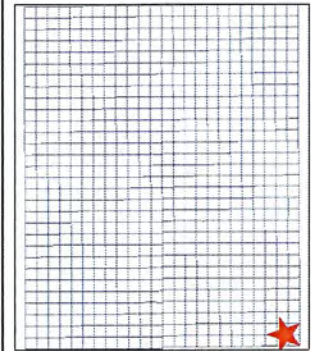
Leonard Sullivan Oklahoma County Assessor
ONLINE MAPPING

Y Mart C-Store



Notes: Excess Land (Lots 9 thru 16)

This map is a user generated static output from an Internet mapping site and is for general reference only. Data layers that appear on this map may or may not be accurate, current, or otherwise reliable. THIS MAP IS NOT TO BE USED FOR NAVIGATION.



Legend

- Annotation
- Sections
- Streets
- Parcels
- North Canadian River
- Rivers & Creeks
- Lakes
- Aerials (flown Feb 28th - March 23rd, 2011)
- County Background



Scale: 1:968



ONLINE MAPPING