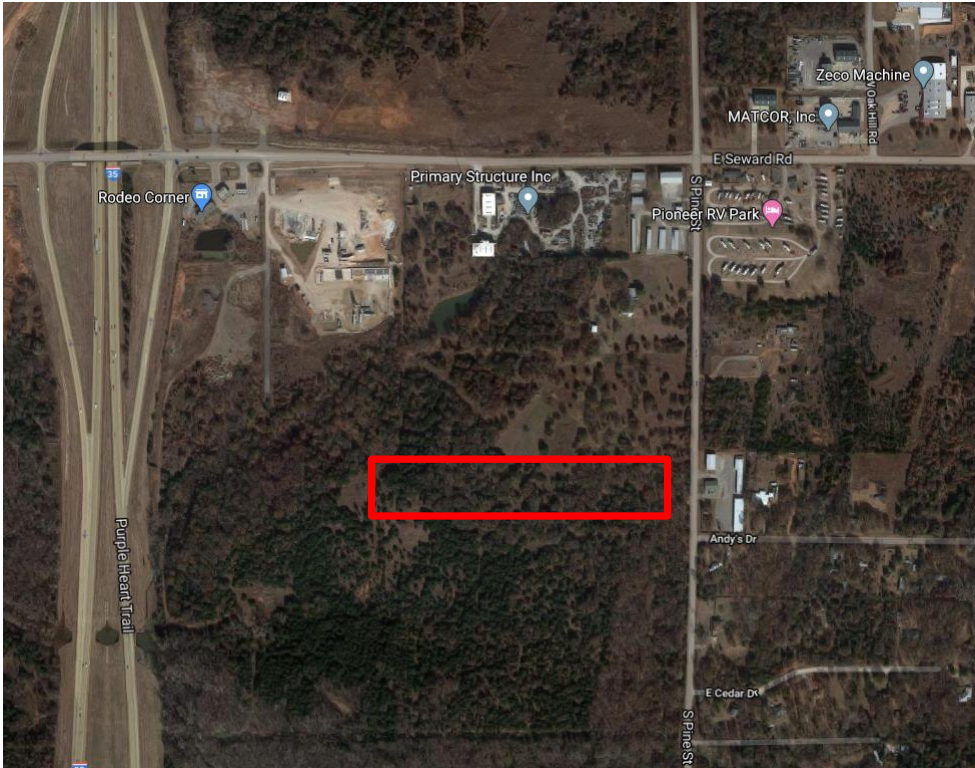




# JR FULTON & ASSOCIATES, LLC

COMMERCIAL, INDUSTRIAL AND INVESTMENT REAL ESTATE

OFFERED EXCLUSIVELY  
FOR SALE  
BY: RAY L WULF  
(405) 308-3480



**PROPERTY TYPE:** DEVELOPMENT LAND

**LOCATION:** South of the SE/C of Pine and Seward Rd.  
(South of SE/C of Pine & Seward Rd.)  
Guthrie, OK 73044

**LAND AREA:** 10 Acres MOL

**GENERAL:** Electric service available thru OG+E. Lines along Seward and Pine.  
Water available thru Logan County Water District. Lines on south  
side of Seward going east to Pine.  
Gas service would be thru ONG.

**ZONING:** Logan County - AG

**FOR SALE:** \$300,000.00 (\$.69/SF)

**FOR ADDITIONAL INFORMATION CONTACT:** RAY L WULF

Cell: 405.308.3480

Office: 405.840.0200

Email: [ray@jrfulton.com](mailto:ray@jrfulton.com)

[www.jrfulton.com](http://www.jrfulton.com)

# 49810